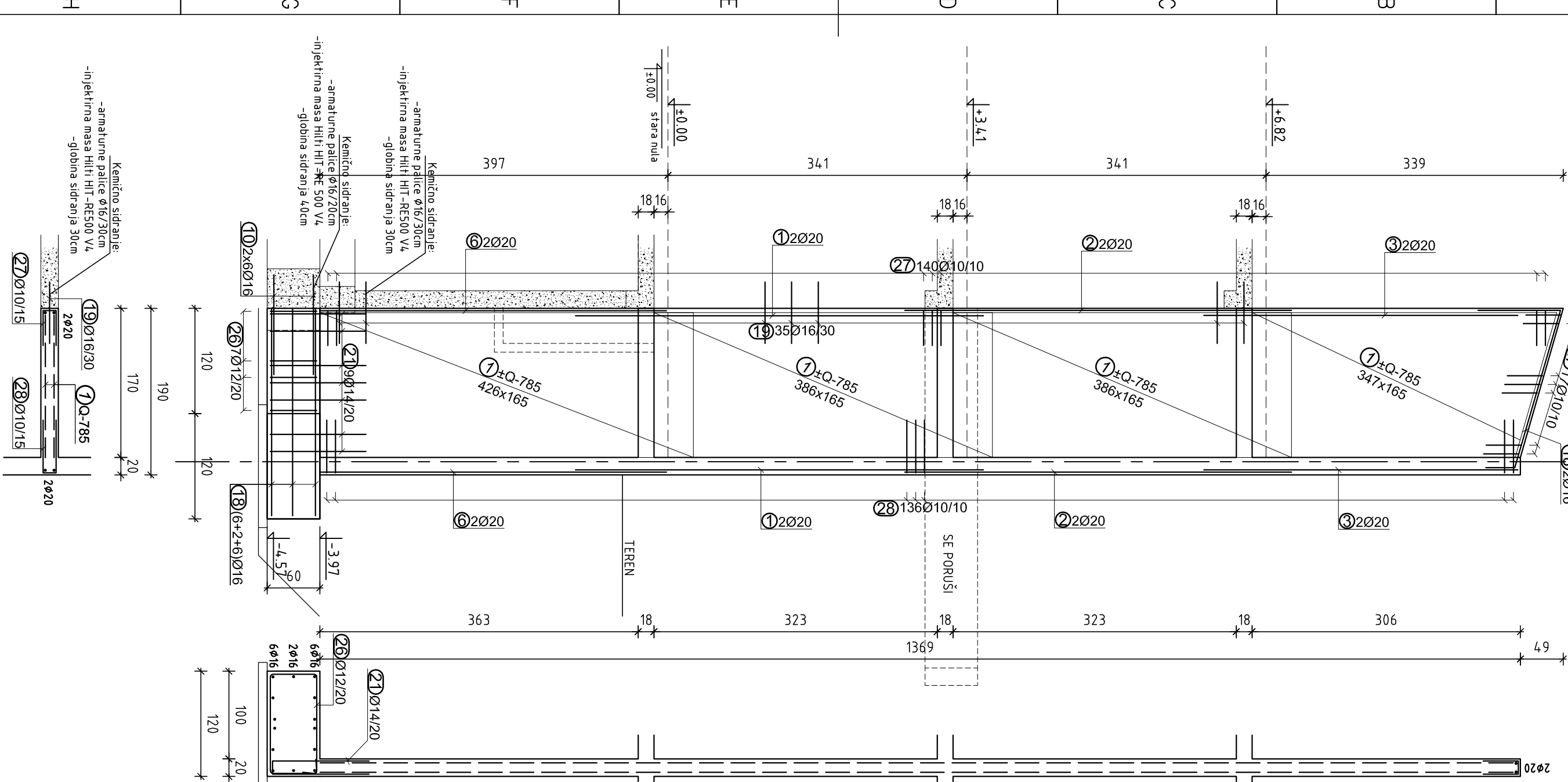


ABSTENA v osi G

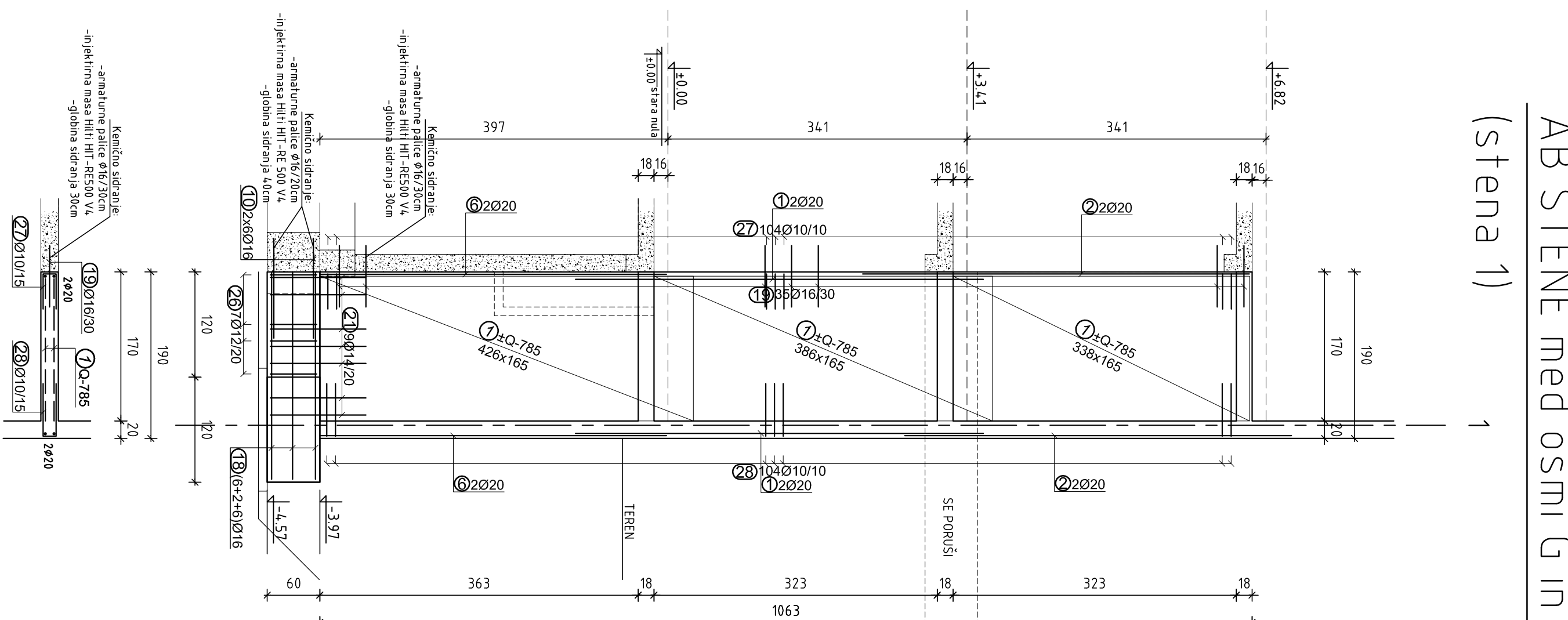
ABSTENE med osmiG in i

(stena 1)



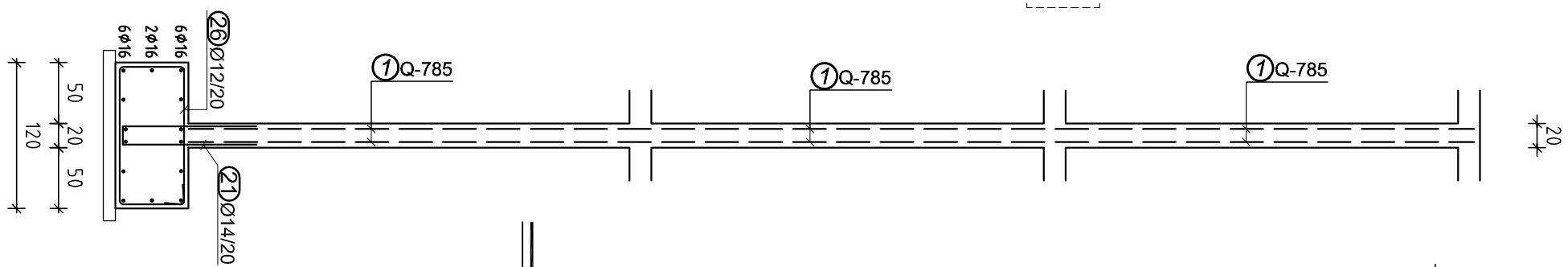
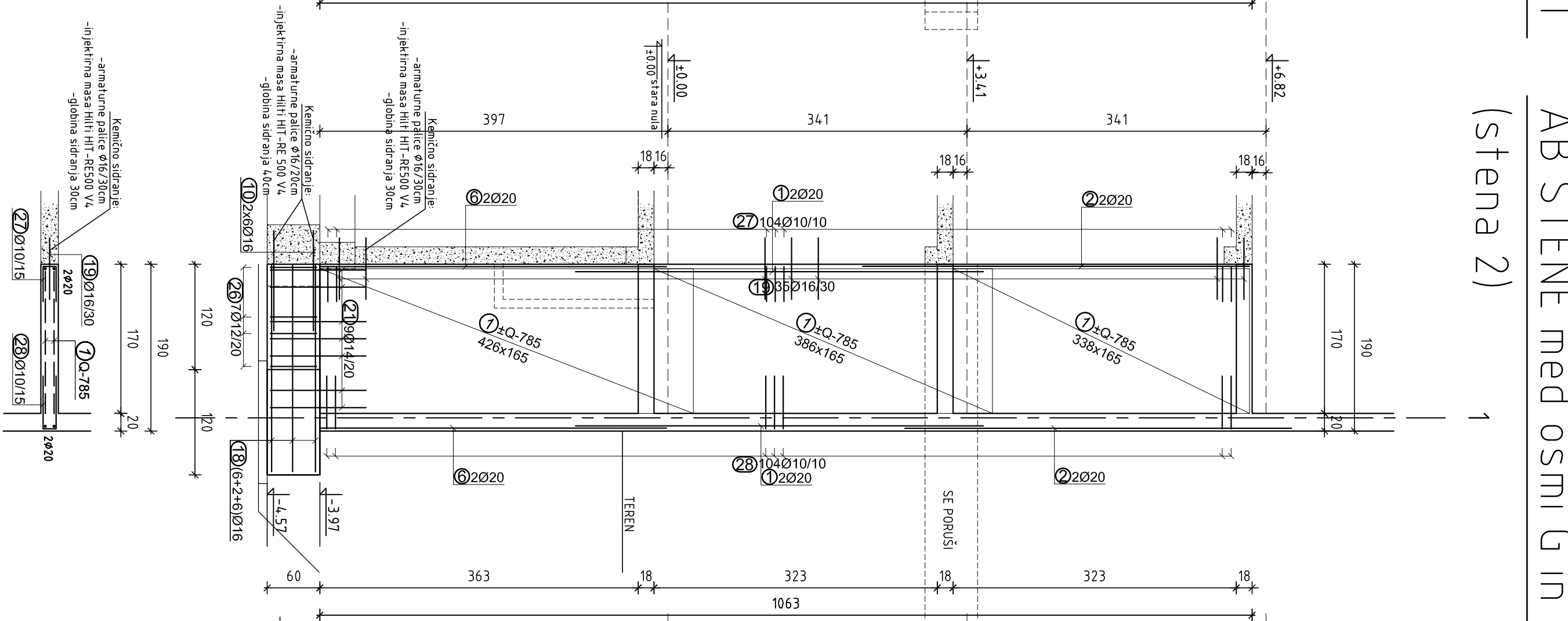
ABSTENE med osmiG in i

(stena 2)

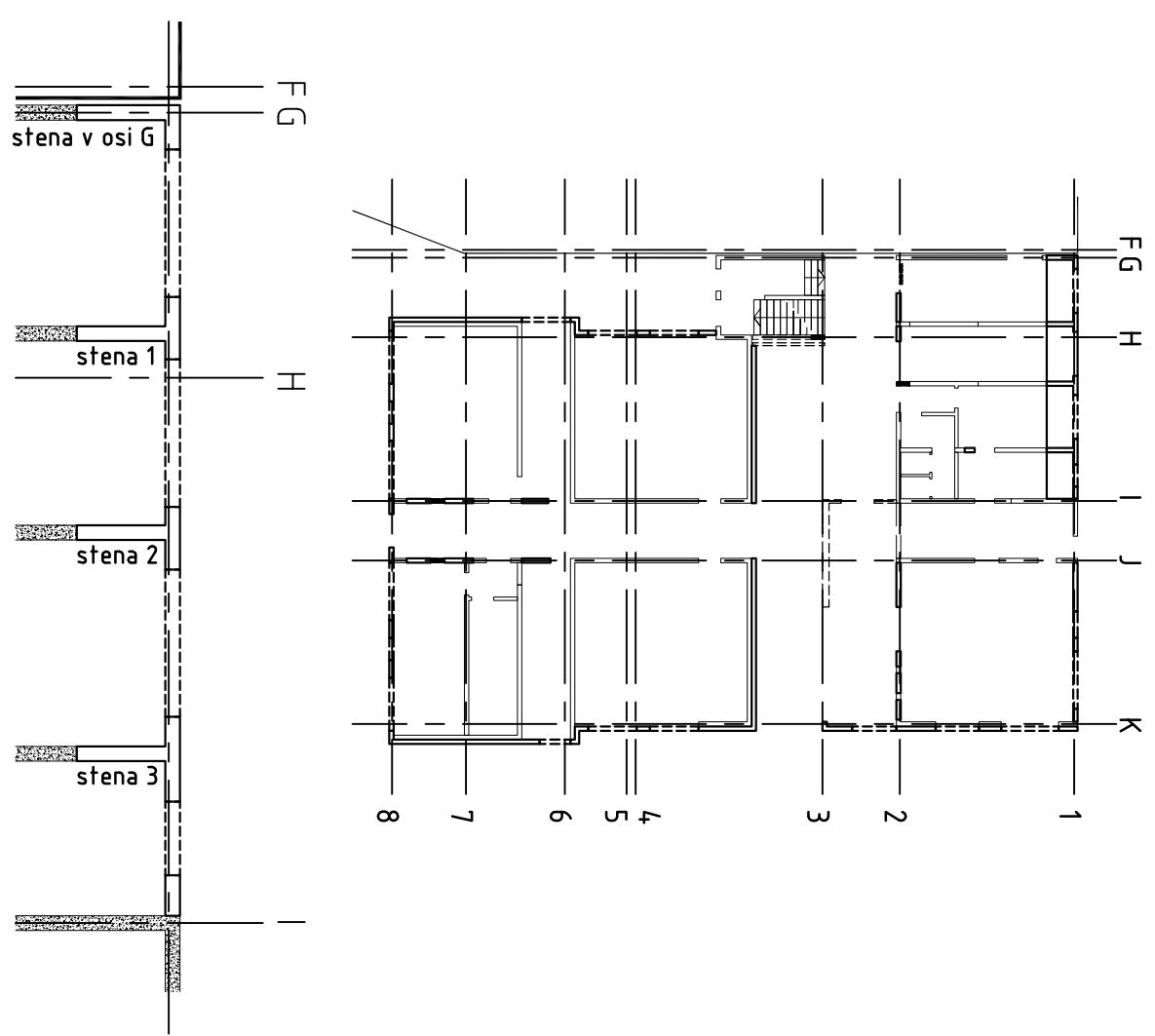


ABSTENE med osmiG in i

(stena 3)



DISPOZICIJA STEN



- | | | |
|--------------------|-----------------|---------------------------|
| • pasovni temelji: | C30/37 XC2 PV-I | G _{tem} = 3,5 cm |
| • stene: | C30/37 XC1 | G _{tem} = 2,5 cm |
| • nosilci: | C30/37 XC1 | G _{tem} = 2,5 cm |
| • podložni beton: | C12/15 | |

- | | |
|--------------------------------|--------|
| Klasifikacija armature: | |
| • glavna armatura | B500-B |
| • konstruktivna armatura | B500-A |

ne. del gradnje: II. Taza: sola

[illegible]